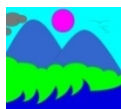


G1957C variation in Core Promoter and Precore/Core regions of Hepatitis B virus isolated from men who have sex with men (MSM) in Surakarta, Central Java, Indonesia	107-110
Genetic regulation of allolysis in response to sub-lethal antibiotic stress in <i>Streptococcus pneumoniae</i>	111-117
Physiological and biochemical responses of thyme plants to some antioxidants	118-125
Biodeterioration of stored castor ( <i>Ricinus communis</i> ) seeds by <i>Aspergillus tamarii</i>	126-131
Endophytic <i>Phoma</i> sp. isolated from medicinal plants promote the growth of <i>Zea mays</i>	132-139
Effect of irrigation intervals on growth and chemical composition of some <i>Curcuma</i> spp. plants	140-145
The effects of saline irrigation water and cobalt on growth and chemical composition in <i>Nigella sativa</i>	146-151
Qualitative and financial evaluation of public and private forest nurseries; Case study of southern Zagros forests, Iran	152-158
Subtropical forest Hara Biosphere Reserve in coast of Persian Gulf and the importance of heavy metal accumulation; Case study: feathers of great cormorant	159-164
Potential geographic distribution of mountainous selaginellas of Java, Indonesia	165-172
<b>Review:</b>	
Mushroom refinement endeavor auspicate non green revolution in the offing	173-185
Advancements and application of immunosensors in the analysis of food contaminants	186-195
Emulsification properties of soy bean protein	196-202
<b>Short Communication:</b>	
Contamination of cell phones by pathogenic microorganisms: Comparison between hospital staff and college students	203-206



Society for  
 Indonesian Biodiversity



Sebelas Maret University  
 Surakarta



# NUSANTARA BIOSCIENCE

ISEA JOURNAL OF BIOLOGICAL SCIENCES

| Nus Biosci | vol. 6 | no. 2 | pp. 107-207 | November 2014 |  
| ISSN 2087-3948 | E-ISSN 2087-3956 |

*Streptococcus pneumoniae* photo by Carlos Rosas

